



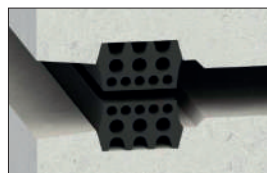
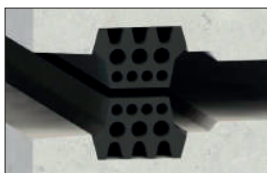
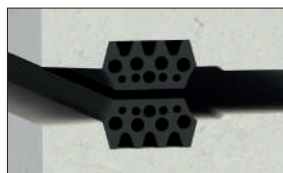
# Working the rubber since 1987



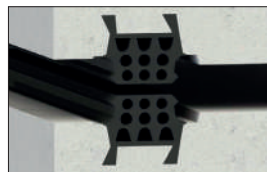
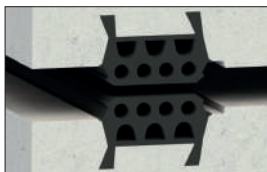
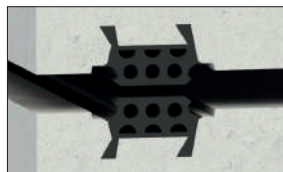
## ALGAHER Tunnel Segment Gaskets

ALGAHER offers a variety of different models of gaskets to meet the needs of our customer. The models shown here are only small parts of the ones we have developed. We have gasket models for width grooves from 26mm to 44mm.

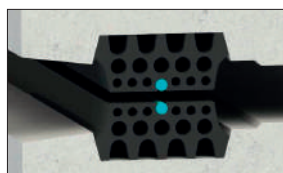
### Glued gaskets



### Anchored gaskets



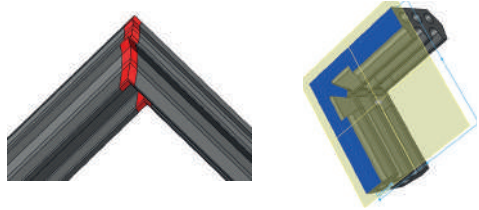
### Combined gaskets EPDM & Hydrophilic



# ALGAHER Corner design

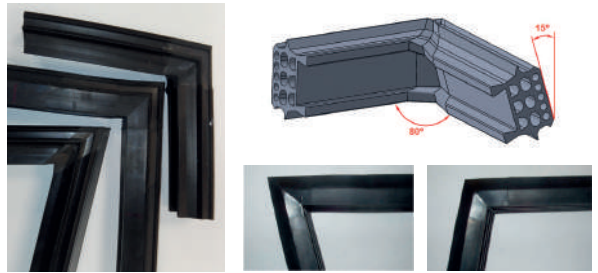
## Soft corner

A system developed by ALGAHER controls the injection parameters in order to reduce the quantity of injection material in the corners and avoid material invasion inside the geometry of the profile.



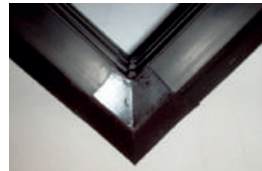
## Corner adapted for each angle

We produce our corners according to each segment through injection moulds of 80, 90 and 100 degrees. Besides, our corner system is capable of perform twisted angles.



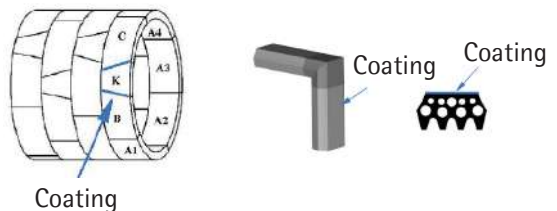
## Corner with sharp edge

We design and manufacture all our corners through an accurate system, which achieves very sharp edges. Due to our sharp edges, our gaskets reach great values in T joints point.



## Coating Corner

All the ALGAHER profiles and corners regarding to K segment and its counter keys, carry a special coating which reduces the friction coefficient between the gaskets in the moment of the installation.



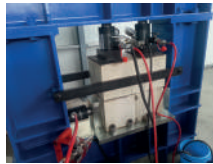
## Our tests: Real tests

### Water Tightness TESTS

We perform water tightness tests according to **STUVA Recommendations**, in all our glued and anchored gaskets. Each profile has its own tools:



Bedplate where water tightness tests for glued gasket are performed.



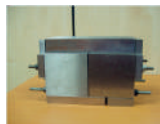
Bedplate where water tightness tests for anchored gaskets are performed. Detail of an anchored gasket in a concrete block.



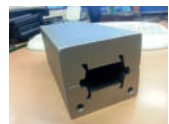
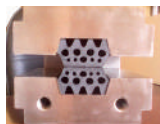
### Compression TESTS

We perform compression tests according to **STUVA Recommendations** and **European Standard 681-1:1996** in all our gaskets:

- Load Deflection
- Restoration capacity
- Stress relaxation



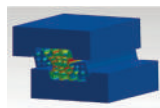
Pictures of tools for compression tests in corners.



Pictures of tools for compression tests in profiles.

### Analysis by FEM

Due to our engineering department, we can perform FEM analytics in order to study the behavior about our profiles and achieve more functional geometries.



## Production & Control

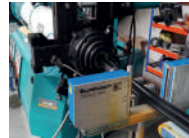
### Production Capacity

ALGAHER has the last technology in extrusión system. Currently, ALGAHER has 3 extrusion lines and 15 injection units, which are able to attend to any project.



### Product Control

The ALGAHER production system is provided with different systems of dimensional control online and offline. These systems ensure that the gaskets geometry is inside the tolerances allowed by the standard ISO ISO 3302.



Our quality department has a laboratory where different tests are performed everyday according to **European Standard 681-1:1996** and **STUVA Recommendations**.



Ctra. Corella s/n  
26540 - Alfaro (SPAIN)  
T. +34 941 182 153  
F. +34 941 183 715  
algaher@grupoalgaher.com  
www.grupoalgaher.com  
Certified ISO 9001:2008

